

UHealth Pathology delivers unsurpassed expertise with fast, personalized service.



Client and Consult Services  
1400 NW 12th Avenue, Room 4076  
Miami, FL 33136

Non-Profit  
U.S. Postage  
PAID  
Miami, FL  
Permit No.438

**UHEALTH PATHOLOGY**  
University of Miami Health System

## UHEALTH PATHOLOGY Diagnostic Hematopathology Service



## UHealth Hematopathology Service

**The Division of Hematopathology provides diagnostic services and specialized testing** for patients with all types of acute and chronic leukemia, nodal and extranodal lymphoma, myelodysplastic syndrome, myeloproliferative neoplasm, plasma cell myeloma, and benign hematologic disorders.

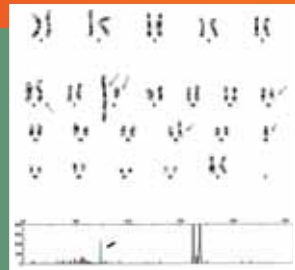
**We provide a comprehensive hematopathology consultation report** containing diagnostic and prognostic information. Our team of expert hematopathologists integrates the clinical laboratory testing, immunohistochemistry, flow cytometric, and molecular data with the histomorphology to arrive at final diagnosis applying the current WHO (2008) schema for the classification of hematopoietic malignancies.

### Extraordinary Expertise at Your Service

- Access to our fellowship-trained, subspecialty board-certified hematopathologists
- Efficient personal attention and timely reporting with rapid turnaround
- In-house Immunohistochemistry, flow cytometry, cytogenetics and molecular diagnostic laboratories
- Second-opinion consults
- Third party billing options

Customer Service: 305-243-PATH (7284) Monday through Friday, 8 a.m. - 5 p.m.

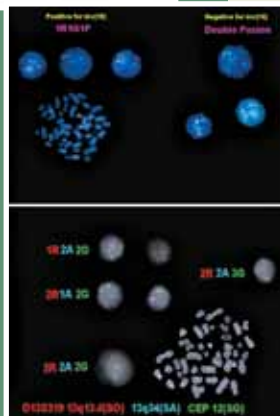
## Hematopathology Consultation, Laboratory Testing, and Diagnosis



UHealth Hematopathology operates specialized laboratories for immunohistochemistry, *in situ* hybridization, molecular diagnostics, flow cytometry, cytogenetic, and FISH analysis.

Services include:

- Morphologic and immunohistochemical evaluation of lymph nodes and bone marrow specimens
- Flow cytometry evaluation of bone marrow aspirates, peripheral blood, fluids, and lymphoid tissue
- FISH and cytogenetic studies for evaluation of chromosomal translocations and genetic abnormalities
- PCR studies to detect monoclonality in B- and T-cell neoplasms



### Our Expert Team

From left to right: Yao-Shan Fan, Offiong Ikpatt, Maureen Cioffi-Lavina, Jennifer Chapman, Francisco Vega, Gerald Byrne, Artur Rangel, and Carmen Casas

### Our Hematopathology Experts

**Francisco Vega, M.D., Ph.D.**, director of the Division of Hematopathology, is a renowned academic hematopathologist who provides expert consultation in all areas of neoplastic hematopathology, with an emphasis in lymph node pathology.

**Gerald E Byrne, M.D.**, is recognized for his special expertise in the morphologic diagnosis of malignant lymphomas.

**Offiong F. Ikpatt, M.D.**, director of the clinical flow cytometry laboratory, has particular interest and expertise in benign hematology, flow cytometry immunophenotyping, and bone marrow and peripheral blood pathology.

**Jennifer Chapman, M.D.**, director of the clinical and research immunohistochemistry laboratory, has particular expertise and interest in malignant lymphomas.

**Maureen Cioffi-Lavina, DO**, hematopathologist and cytopathologist, is an expert in general hematopathologist with particular interest in bone marrow pathology.

### Our Cytogenetic and Molecular Experts

**Yao-Shan Fan, M.D., Ph.D.**, is professor of pathology and director of the Cytogenetics and Molecular Laboratory.

**Artur Rangel Filho, M.D., Ph.D.**, associate director of the Molecular Diagnostics Laboratory, has expertise in molecular genetic pathology, clinical pathology, and transfusion medicine.

**Carmen Casas** has expertise in cytogenetics and molecular diagnostics.

### CUSTOMER SERVICE:

Monday through Friday, 8 a.m. - 5 p.m.  
305-243-PATH (7284)

University of Miami Health System  
**DEPARTMENT OF PATHOLOGY**  
Client and Consult Services  
1400 NW 12th Avenue, Room 4076  
Miami, FL 33136  
Phone: 305-243-PATH (7284)  
Fax: 305-689-PATH (7284)  
[pathology.med.miami.edu](http://pathology.med.miami.edu)



Scan here to obtain the Department of Pathology digital contact information.

Don't have a QR Reader? Download a free "QR Reader"

app from your mobile device's application store and then scan this code to get the Department of Pathology contact information.